

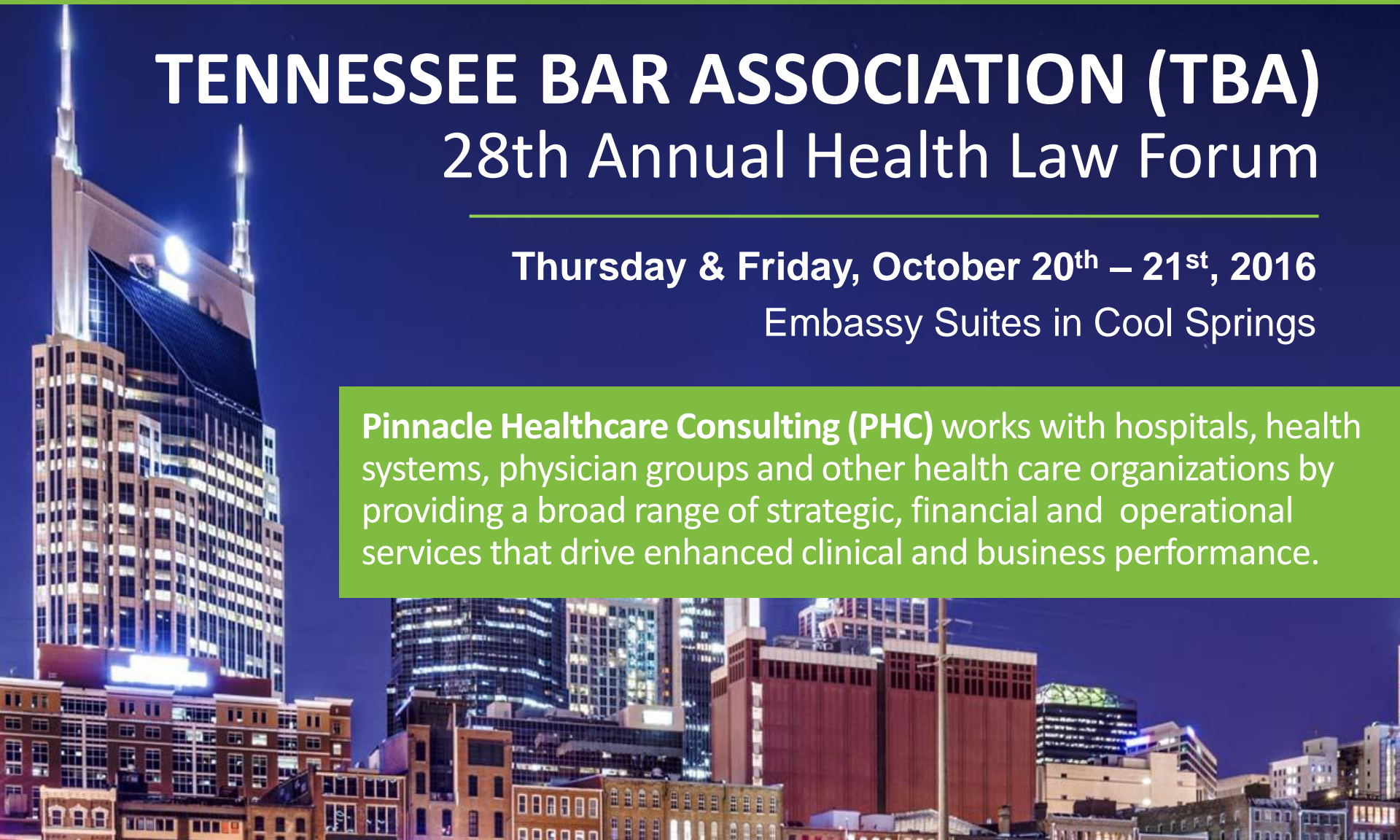


October 20 – 21, 2016 . . . *We'll see you in Nashville*

## TENNESSEE BAR ASSOCIATION (TBA) 28th Annual Health Law Forum

Thursday & Friday, October 20<sup>th</sup> – 21<sup>st</sup>, 2016  
Embassy Suites in Cool Springs

Pinnacle Healthcare Consulting (PHC) works with hospitals, health systems, physician groups and other health care organizations by providing a broad range of strategic, financial and operational services that drive enhanced clinical and business performance.



### PINNACLE PROFESSIONAL TEAM ATTENDING . . .



**Curtis Bernstein – Principal**  
CPA/ABV, CVA, ASA, CHFP, MBA

Curtis joined Pinnacle as a Principal in 2015. Curtis has two decades of management in the provider and consulting settings. For the past decade, Curtis has focused on strategic and valuation consulting services around provider relationships in the healthcare industry. Prior to joining Pinnacle, Curtis was a managing director of transaction advisory services at Altegra Health and director of valuation services at HealthCare Appraisers where he worked with clients including law firms, hospitals, ancillary service providers, physician practices, and life sciences clients.



**Bobby Stamper – Consultant**  
MBA

Bobby joined Pinnacle Healthcare Consulting in 2016 as a Consultant. Bobby supports Pinnacle's business valuation and physician compensation valuation divisions with expertise and experience in the valuation of physician practices, ASCs, and other provider entities, as well as the evaluation of the fair market value of provider compensation under co-management, clinically integrated network, and shared savings arrangements

*"The executives of Pinnacle make up an exceptional team. Their collective knowledge base and broad expertise is impressive. Every issue was addressed quickly, concisely and accurately. I'm looking forward to our continued work together." – PHC client*

### MAXIMIZING CLINICAL AND BUSINESS PERFORMANCE

Call us at (303) 801-0111 or visit us online at . . . [AskPHC.com](http://AskPHC.com)